

MC-CH ELECTRIC CHAIN HOIST FROM 40 TO 5000 KG

- n COMPACT DESIGN
- n ROBUST CONSTRUCTION
- n EASE OF MAINTENANCE
- n AVAILABILITY ASSURED
- n ADVANCED TECHNOLOGY
- n LIFTING CAPACITY UNTIL 5000 KG
- n PROTECTION CLASS IP 55 (OPTION IP 65)

WORLD'S FIRST IN SAFETY

- n Double slip clutch (best overload protection ever). Authority's safety test passed superbly! Five times more secure than the regulations require!
- n Highest safety with brake positioned after the slip clutch
- n End of chain is fixed to the hoist body
- n Standard geared limit switch: chain length up to 120 m
- n Made for industrial use: body and covers completely built in aluminum
- n Jamming of the chain excluded due to two part plastic chain guide

WORLD'S FIRST IN SERVICE AND HANDLING

- n Easy adjustment of the slipping clutch
- n No special tools or electronic devices required
- n Disc brake system maintenance free
- n Chain guide removable without disassembly of the hoist
- n Easy conversion from 1 to 2 fall (double load capacity)
- n Ergonomic 2 and 4 button control pendant with support wire
- n Silent working due to helical gears
- n Standard low voltage control (42 V)



MC-CH ELECTRIC CHAIN HOIST

FROM 40 TO 5000 KG

Type description	Capacity in kg following FEM*					Lifting speed m/min	Chain mm
	1Bm M3	1Am M4	2m M5	3m M6	4m M7		
MCCH 250/1N	250	200	160	125	100	8	4x12.3
MCCH 250/1NF	250	200	160	125	100	8/2	4x12.3
MCCH 250/1SF	160	125	100	80	60	12.5/3	4x12.3
MCCH 250/1HF	100	80	60	50	40	20/5	4x12.3
MCCH 250/2N	500	400	320	250	200	4	4x12.3
MCCH 250/2NF	500	400	320	250	200	4/1	4x12.3
MCCH 250/2SF	320	250	200	160	125	6.3/1.5	4x12.3
MCCH 500/1N	500	400	320	250	200	8	5x15.3
MCCH 500/1NF	500	400	320	250	200	8/2	5x15.3
MCCH 500/1SF	320	250	200	160	125	12.5/3	5x15.3
MCCH 500/1HF	200	160	125	100	80	20/5	5x15.3
MCCH 500/2N	1000	800	630	500	400	4	5x15.3
MCCH 500/2NF	1000	800	630	500	400	4/1	5x15.3
MCCH 500/2SF	630	500	400	320	250	6.3/1.5	5x15.3
MCCH 1000/1N	1000	800	630	500	400	8	7x22
MCCH 1000/1NF	1000	800	630	500	400	8/2	7x22
MCCH 1000/1SF	800	630	500	400	320	16/4	7x22
MCCH 1000/2N	2000	1600	1250	1000	800	4	7x22
MCCH 1000/2NF	2000	1600	1250	1000	800	4/1	7x22
MCCH 1000/2SF	1600	1250	1000	800	650	8/2	7x22
MCCH 1600/1N	1600	1250	1000	800	630	8	9x27
MCCH 1600/1NF	1600	1250	1000	800	630	8/2	9x27
MCCH 1600/1SF	1000	800	630	500	400	12.5/3	9x27
MCCH 1600/2N	3200	2500	2000	1600	1250	4	9x27
MCCH 1600/2NF	3200	2500	2000	1600	1250	4/1	9x27
MCCH 1600/2SF	2000	1600	1250	1000	800	6.3/1.5	9x27
MCCH 2000/1N	2000	1600	1250	1000	800	8	10x28
MCCH 2000/1NF	2000	1600	1250	1000	800	8/2	10x28
MCCH 2000/1SF	1250	1000	800	630	500	12.5/3	10x28
MCCH 2000/2N	4000	3200	2500	2000	1600	4	10x28
MCCH 2000/2NF	4000	3200	2500	2000	1600	4/1	10x28
MCCH 2000/2SF	2500	2000	1600	1250	1000	6.3/1.5	10x28
MCCH 2500/1N	2500	2000	1600	1250	1000	6.4	10x28
MCCH 2500/1NF	2500	2000	1600	1250	1000	6.4/1.6	10x28
GCH 2500/1SF	1600	1250	1000	800	630	10/2.5	10x28
MCCH 2500/2N	5000	4000	3200	2500	2000	3.2	10x28
MCCH 2500/2NF	5000	4000	3200	2500	2000	3.2/0.8	10x28
MCCH 2500/2SF	3200	2500	2000	1600	1250	5/1.25	10x28

* FEM classification: switches per hour on control pendant

1Bm (M3) = 150 switches per hour, 25% duty

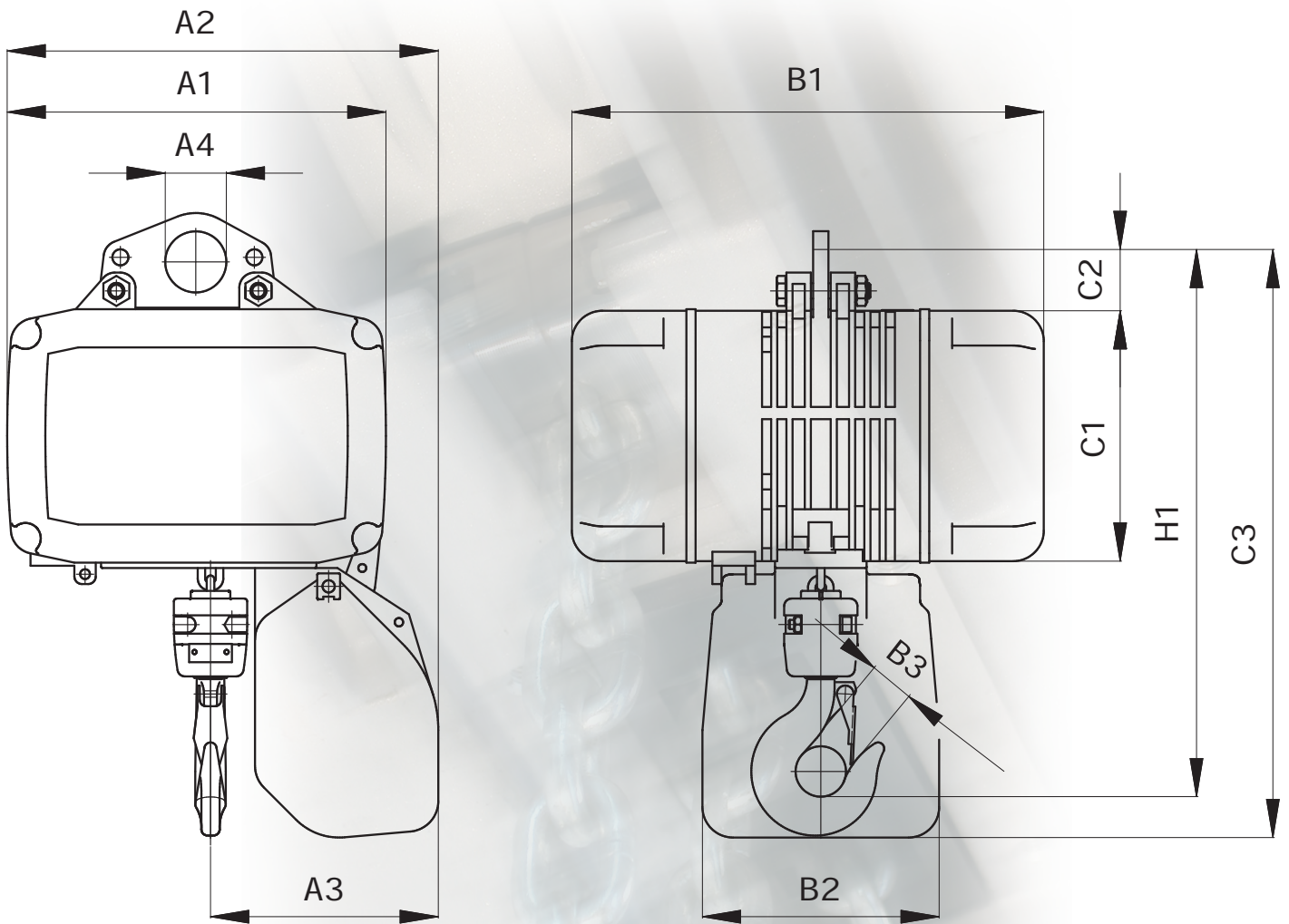
1Am (M4) = 180 switches per hour, 30% duty

2m (M5) = 240 switches per hour, 40% duty

3m (M6) = 300 switches per hour, 50% duty

4m (M7) = 360 switches per hour, 60% duty

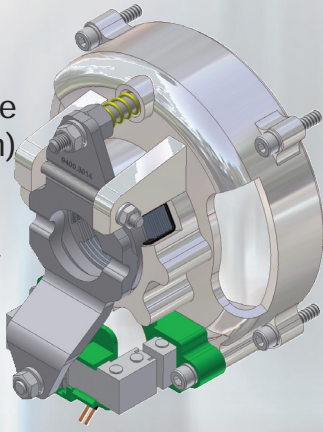
DIMENSIONS MC-CH ELECTRIC CHAIN HOIST



Type	A1 mm	A2 mm	A3 mm	A4 mm	B1 mm	B2 mm	B3 mm	C1 mm	C2 mm	C3 mm	H1 mm
MCCH 250/1	246	281	146	40	309	155	26	164	40	385	363
MCCH 250/2	246	281	164	40	309	155	26	164	40	385	395
MCCH 500/1	246	281	146	40	309	155	27	164	40	385	377
MCCH 500/2	246	281	169	40	309	155	27	164	40	385	417
MCCH 1000/1	321	381	195	52	365	185	33	210	52	530	450
MCCH 1000/2	321	381	235	52	365	185	33	210	52	530	520
MCCH 1600/1	345	428	225	75	391	185	33	230	80	575	490
MCCH 1600/2	345	428	265	75	391	185	33	230	80	575	610
MCCH 2000/1	345	428	225	75	391	185	33	230	80	575	490
MCCH 2000/2	345	428	265	75	391	185	33	230	80	575	610
MCCH 2500/1	345	428	225	75	391	185	33	230	80	575	490
MCCH 2500/2	345	428	265	75	391	185	33	230	80	575	610

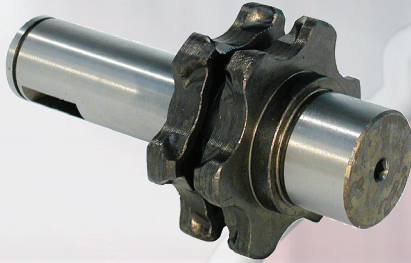
Brake

- n Maximum safety (construction: brake after slipping clutch)
- n New advanced brake design
- n Unique availability
- n Maintenance free



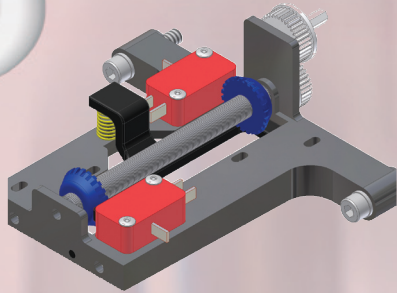
Chain wheel

- n Made of hardened steel
- n With additional chain pockets (4mm): hence quiet running and improved running properties
- n With double bearing construction



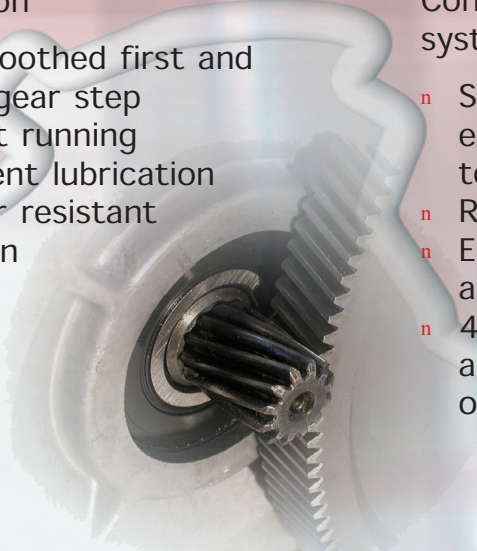
Geared limit switch (standard)

- n Simple adjustment
- n Exact positioning
- n Lifting heights up to 120 m
- n Accuracy for repetition assured



Transmission

- n Helical-toothed first and second gear step for quiet running
- n Permanent lubrication for wear resistant operation

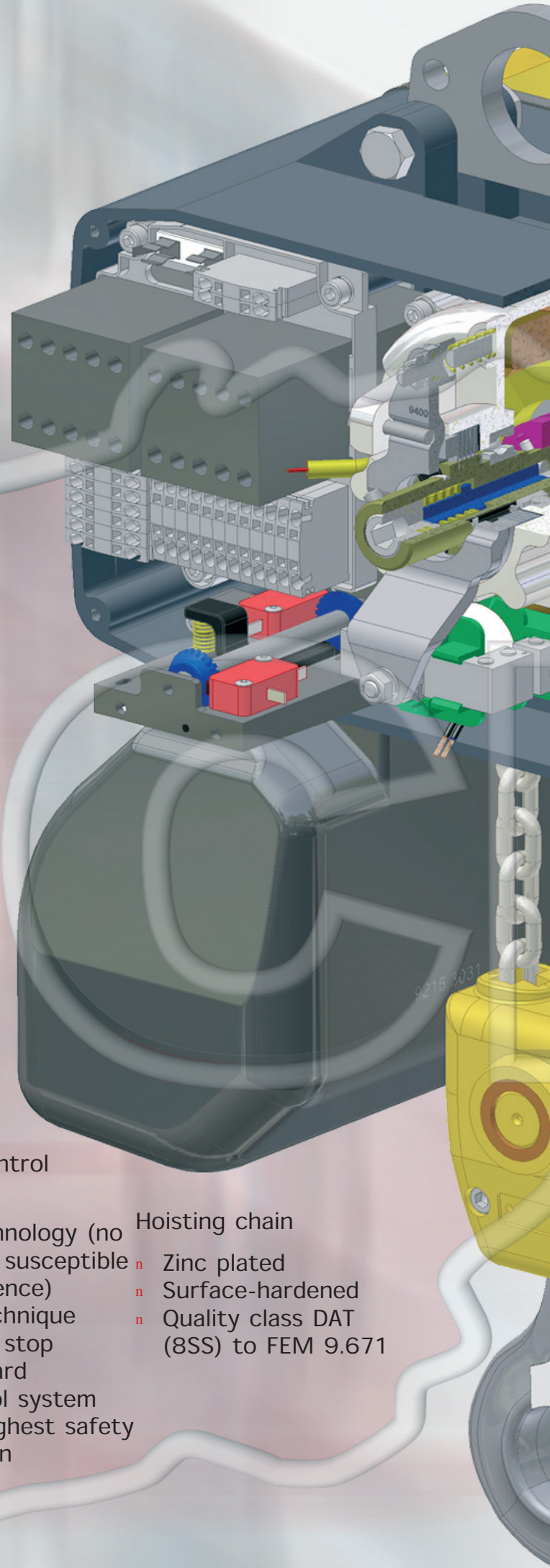


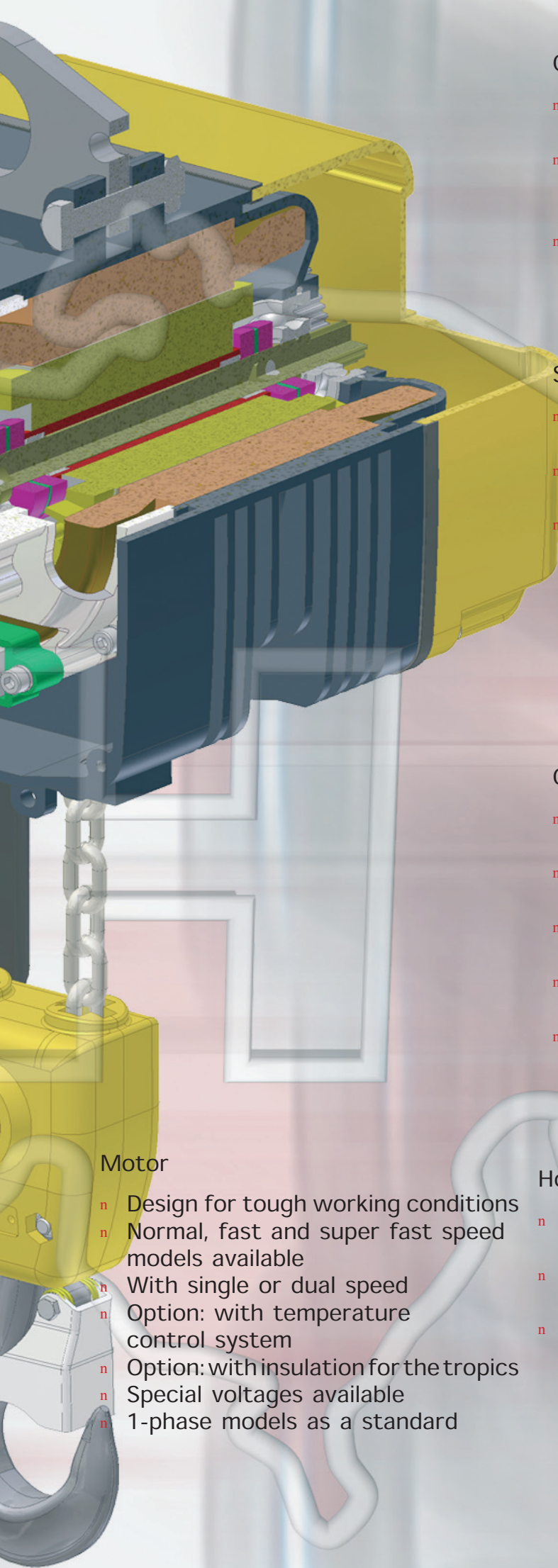
Contactor control system

- n Simple technology (no electronics susceptible to interference)
- n Reliable technique
- n Emergency stop as a standard
- n 42V control system allowing highest safety of operation

Hoisting chain

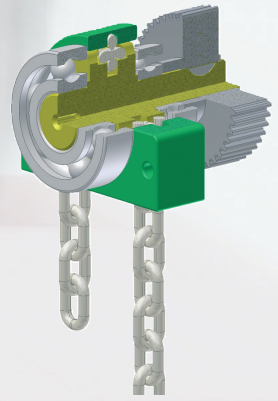
- n Zinc plated
- n Surface-hardened
- n Quality class DAT (8SS) to FEM 9.671





Chain guidance

- n 2-part construction to optimize maintenance
- n Reinforced plastic material highly wear resistant
- n Safe operation jamming excluded



Slipping clutch

- n Simple and precise adjustment
- n Maintenance free and highly resistant to wear
- n Ease of servicing thanks to comfortable access



Control switch

- n With built-in support wire as a standard
- n 2-buttons: design especially ergonomic
- n Emergency stop as a standard
- n Protection: IP65 to DIN 40050
- n Optional: with integrated working hours counter



Motor

- n Design for tough working conditions
- n Normal, fast and super fast speed models available
- n With single or dual speed
- n Option: with temperature control system
- n Option: with insulation for the tropics
- n Special voltages available
- n 1-phase models as a standard

Housing

- n Cast aluminium housing with maximum solidity (no plastic material)
- n For extreme working conditions: casted cooling gills
- n Easy transformation from 1- fall to 2-falls operation: no need of dismantling



Munck Cranes AS

Kokstadvegen 30

5257 Kokstad

Norway

Tel. +47 55 59 80 00

Fax +47 55 59 80 40

Mail: firmapost@munck-cranes.no

www.munck-cranes.no

With Munck Cranes you can rely on a well-rounded product range

MC electric chain hoists offer you the best as standard. For safety reasons, all models have low voltage control and electrical limit switch for highest and lowest hook positions. MC electric chain hoists are used in combination with slewing cranes, Munck overhead rails and cranes, and standard shop cranes running on I-beam steel girders. For further details, please see our technical documentation.



MUNCK